

Information Guide 2022

Vallée Bleue Off Roading

Rue de Corniolay, 38390 Montalieu-Vercieu, France

Centre4x4-vallee-bleue.com



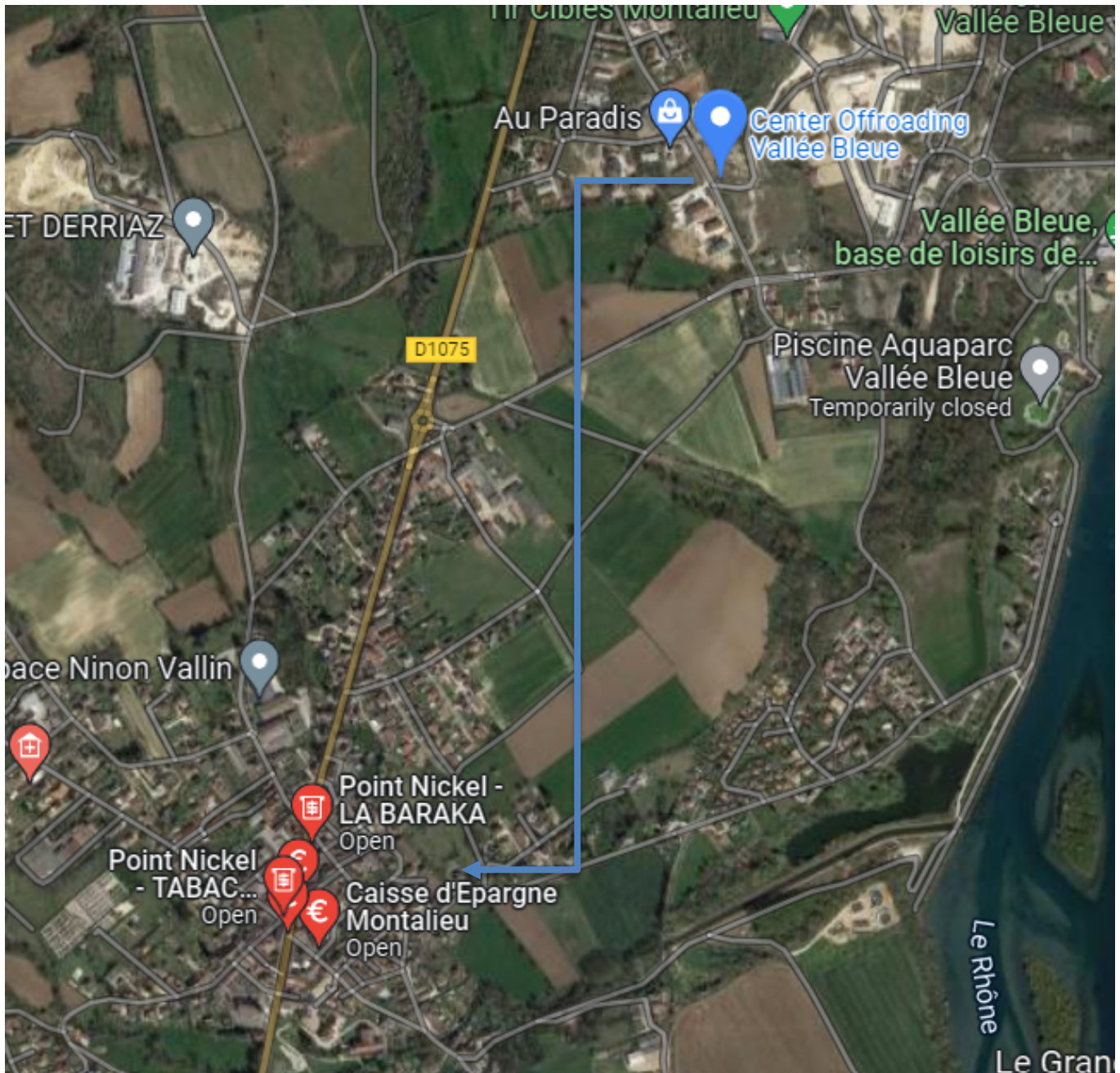
Vallée Bleue Off Roding

Rue de Corniolay, 38390 Montalieu-Vercieu, France



Cash Points

There are numerous cash points 1.6km from Vallée Bleue in Montaliou-Vercieu (approx. 3 min Drive)



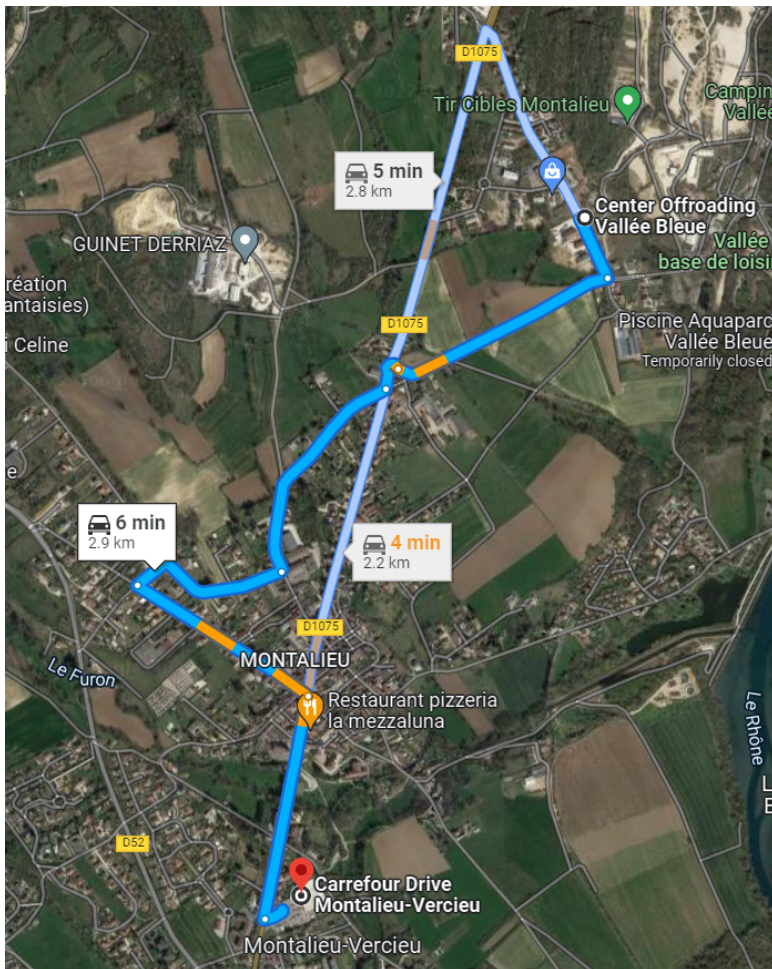
Supermarkets

The closest Supermarket is Carrefour / Market Montalieu-Vercieu (4-6 min drive).

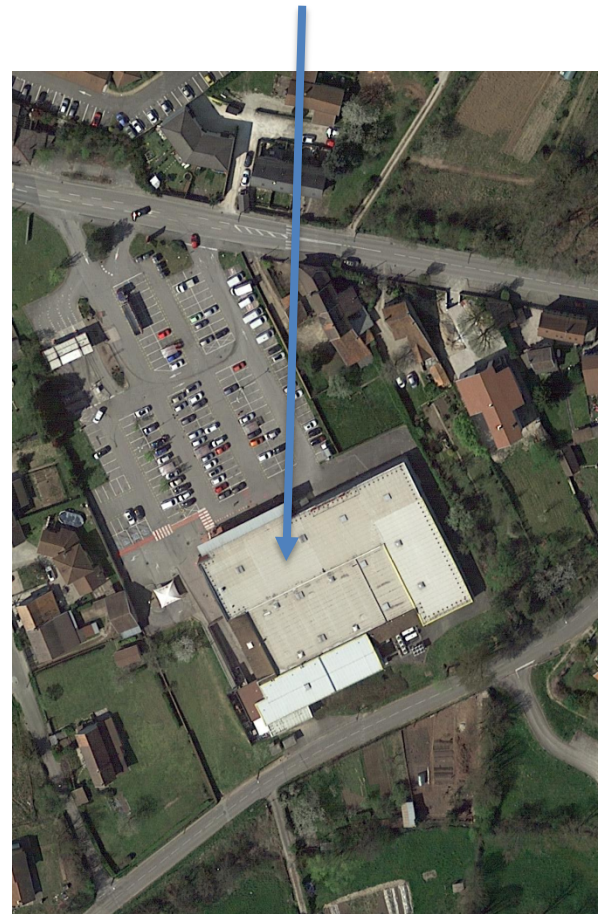
Open: Monday to Saturday 8:30am to 7:30pm
Sunday 9am to 12:30

There is also a fuel station located in the car park area – this is open 24hours

- **151 Grande Rue, 38390 Montalieu-Vercieu**



Carrefour Supermarket



******Fuel Station**

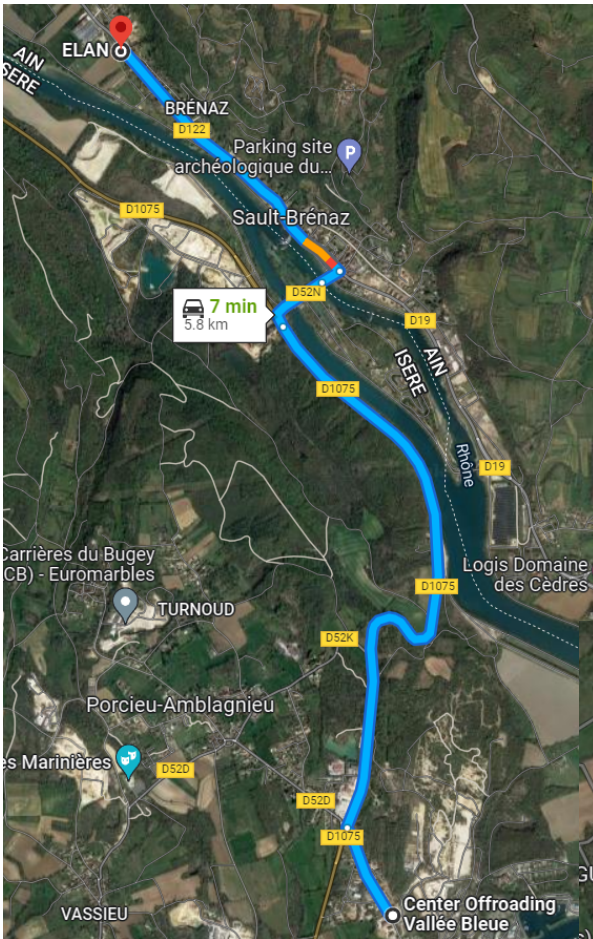
Fuel



Closest Fuel Station from Vallee Bleue is a 4-6 min drive.

Open 24 hours

151 Grande Rue, 38390 Montalieu-Vercieu



5.8km from Vallee Bleue is Elan (7min Drive).

87 Grande Rue, 01150 Sault-Brenaz

Open:

Monday to Friday

06:30am to 12:00noon & 1:30pm to 6:30pm

Saturday

8am to 12:00pm

Pharmacy de Montalieu

1.5km from Vallee Bleue (3 min Drive).

Sunday

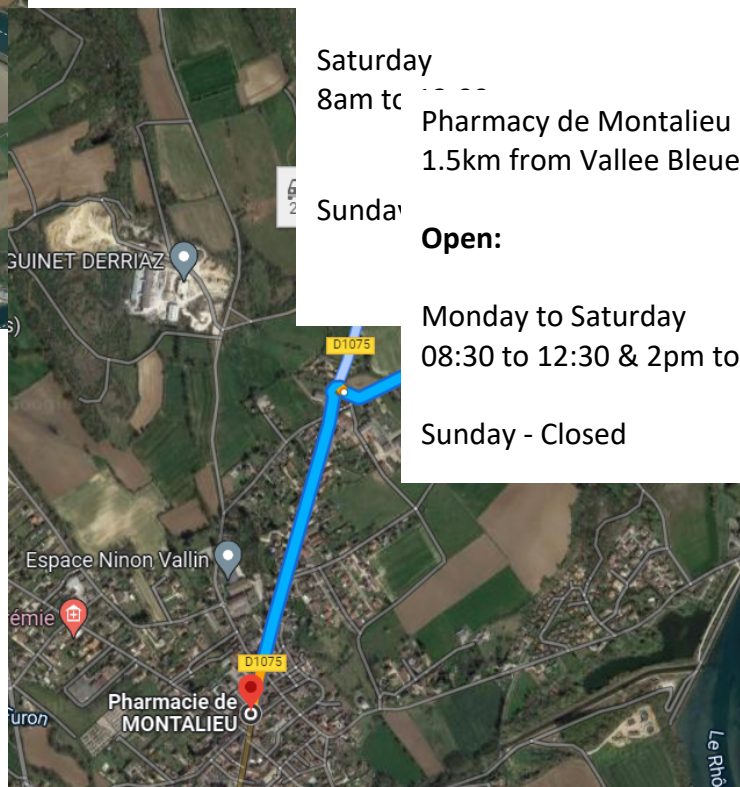
Open:

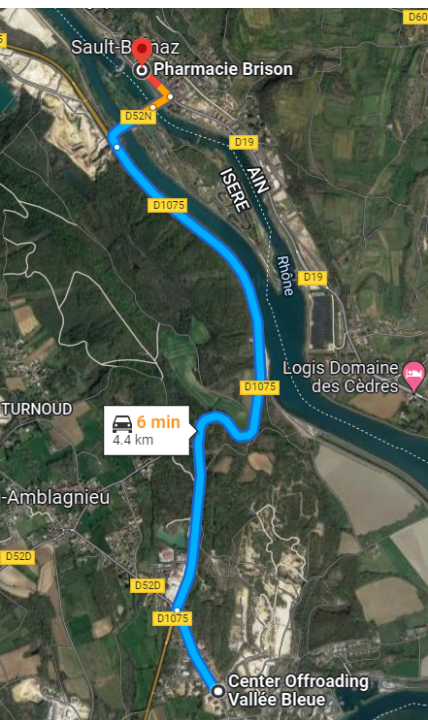
Monday to Saturday

08:30 to 12:30 & 2pm to 7:30pm

Sunday - Closed

Pharmacies





Pharmacy Bison 4.4km from Vallee Bleue (6min drive)

32 Grande Rue, 01150 Sault-Brenaz

Open:

Monday to Friday
08:30am to 12:00 noon
2:30pm to 7pm

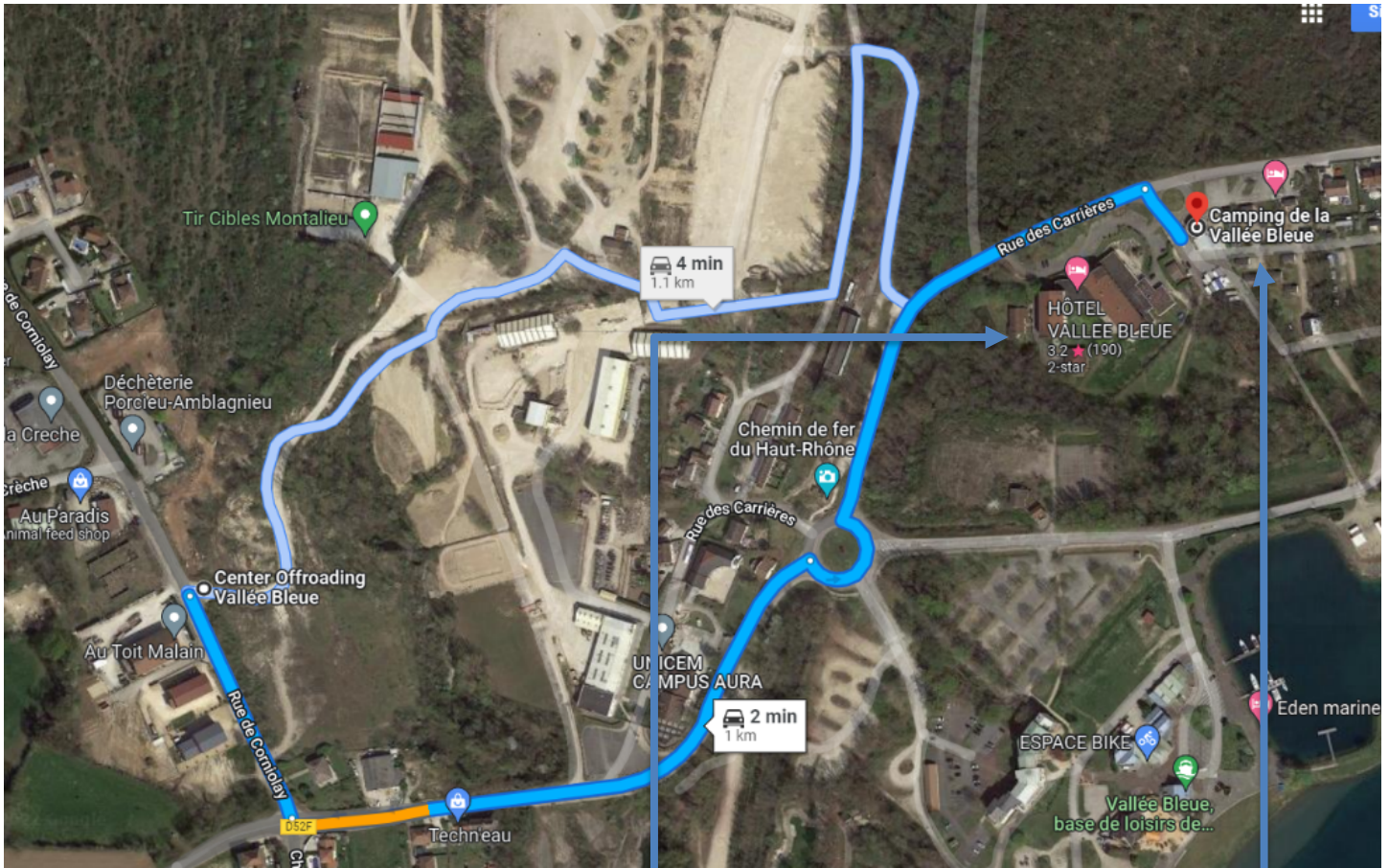
Saturday
08:30 to 12noon

Sunday – Closed

Accommodation

There are accommodation options for those not wanting to camp on site





Hotel Vallée Bleue

19 Rue des Carrières, Rive Gauche 38390
Montalieu-Vercieu

<http://www.hotelvalleebleue.fr>

Camping de la Vallée

Rue des Carrières, 38390 Montalieu-Vercieu
<http://www.camping-valleebleue.com/>